

# Start Strong with Basics Plus



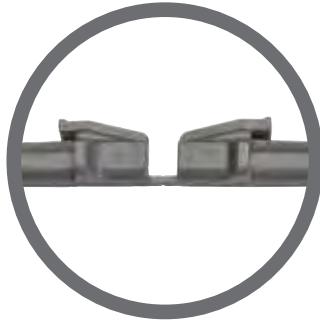
- Lifetime warranty against rust and corrosion.
- Easy to clean and adjust, commercial dishwasher safe.
- Shelf plates have Camguard Antimicrobial protection.
- Shared post design creates extra storage space.
- Simple to assemble straight from the box.
- Vented shelves for maximum airflow around perishable products.

# The New CAMSHELVING® **BASICS PLUS** series

Strong yet cost-efficient, Basics Plus Series can handle the demands of any foodservice operation. Minimise total cost without sacrificing quality or stability with new Basics Plus Series.

Available in:

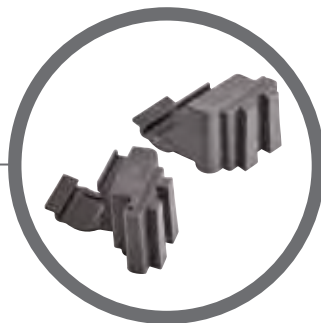
HEIGHTS	DEPTHS	LENGTHS
1	2	6
1830mm	460mm 610mm	765mm 915mm 1070mm 1220mm 1375mm 1525mm



**Breakaway dovetail design speeds up and organises installation.**



**Large traverse end piece wraps securely onto post for maximum stability.**



**Corner connectors maximise storage space and provide easy access to shelf contents.**



Shelf plates are easy to remove and run through the dishwasher.



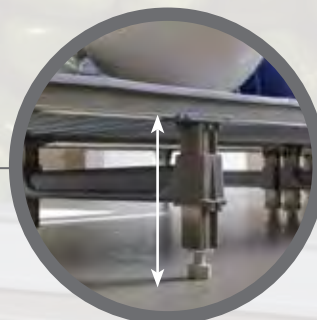
Hefty dovetails keep shelves securely in place.



Traverses are able to share the middle post to maximise space.



Choose solid or vented shelves for many applications. Vented shelves as standard.



Use dunnage stands for added support.



# Camshelving® Basics Plus Starter Units

**Camshelving® Basics Plus Starter Units** 4-Tier 1830mm high with vented shelves as standard.

WIDTH	DEPTH 460MM	DEPTH 610MM
765mm	CBU183072V4	CBU243072V4
915mm	CBU183672V4	CBU243672V4
1070mm	CBU184272V4	CBU244272V4
1220mm	CBU184872V4	CBU244872V4
1375mm	CBU185472V4	CBU245472V4
1525mm	CBU186072V4	CBU246072V4



# Camshelving® Basics Plus Add-On Units

**Camshelving® Basics Plus Add-On Units** 4-Tier 1830mm high with vented shelves.

WIDTH	DEPTH 460MM	DEPTH 610MM
735mm	CBA183072V4	CBA243072V4
885mm	CBA183672V4	CBA243672V4
1040mm	CBA184272V4	CBA244272V4
1190mm	CBA184872V4	CBA244872V4
1345mm	CBA185472V4	CBA245472V4
1495mm	CBA186072V4	CBA246072V4

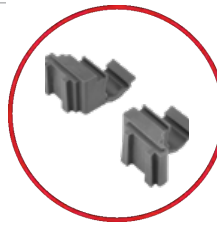


# Camshelving® Basics Plus Shelf Kits

Each shelf kit includes 2 traverses, dovetails and shelf plates.

**Camshelving® Basics Plus Shelf Kits** Made from strong composite and plastic materials. Wipes clean. Rust Proof.

WIDTH	DEPTH 460MM	DEPTH 610MM
765mm	CBSK1830V1	CBSK2430V1
915mm	CBSK1836V1	CBSK2436V1
1070mm	CBSK1842V1	CBSK2442V1
1220mm	CBSK1848V1	CBSK2448V1
1375mm	CBSK1854V1	CBSK2454V1
1525mm	CBSK1860V1	CBSK2460V1



## Corner Connectors

CBCC1 4 sets required per 4 tier unit

# Camshelving® Basics Plus Dunnage Stands

**Camshelving® Basics Plus Dunnage Stands** Increase your weight bearing capacity on the bottom shelf of your unit.

CODE	DESCRIPTION	DIMENSIONS
CBDS18H6	Low	460 x 171mm
CBDS24H6	Low	610 x 171mm
CBDS18H10	Tall	460 x 273mm
CBDS24H10	Tall	610 x 273mm



RECOMMENDED FOR BASICS PLUS UNITS 1375MM AND WIDER



# Camshelving® Universal Storage Rack



SHELVING UNIT  
SOLD SEPARATELY

**A unique way to create vertical storage space. Easily create individual storage sections with rail panels to hold pans, trays, boxes and much more transforming YOUR storage!**

- Easily create individual storage sections with rail panels.
- Ideal for kitchens, coolers, freezers, dry storage and more.
- Holds food pans, boxes, sheet pans, trays, and even pizza dough boxes
- Dishwasher-safe and rust-free.

## For Basics Plus® Shelving

CODE	DESCRIPTION	FITS SHELVING
CBUNVR24	Starter Kit	610mm Deep
CBUNVRA24	Add-on kit	610mm Deep

## Kits Contents

### Storage Rack Starter Kit

- 2 x Rail Panels
- 8 x Bracket Sets
- 8 x Traverse Sets
- 8 x Thumbscrews

### Storage Rack Add-On Kit

- 1 x Rail Panel
- 4 x Bracket Sets
- 4 x Traverse Sets
- 4 x Thumbscrews

